

Substructure Waterproofing - Ancillaries

Bituthene® LM (Liquid Membrane)

Two component elastomeric liquid applied detailing compound for use with Grace waterproof membranes.

Applications

Bituthene® LM is designed to complement Grace sheet systems where liquid applied waterproofing is necessary to ensure watertight continuity. Bituthene LM cures to form a tough seamless rubber-like waterproof layer.

Typical details suitable for Bituthene LM are:

- pile terminations.
- pipe penetrations.
- membrane continuity through masonry.
- internal corners.
- difficult details.

The two parts of Bituthene LM are mixed on site and trowelled on to provide a simple and quick waterproofing detailing aid in conjunction with Bituthene and Preprufe sheet systems.

Installation

Substrate Preparation

Surfaces shall be dry and free from dust, dirt, grease or other contaminants. Ambient temperature shall be +5°C and rising. Bituthene LM should preferably be applied prior to the installation of Bituthene waterproofing membranes.

Bituthene LM may be used as a pointing surface sealer. A minimum overlap of the Bituthene sheet membrane of 50 mm shall be provided. Bituthene LM is compatible with dry Primer B1 and Bituthene Primer S2 and the compound used on all Bituthene and Preprufe systems. Bituthene LM will adhere to clean, dry metal substrates.

Mixing

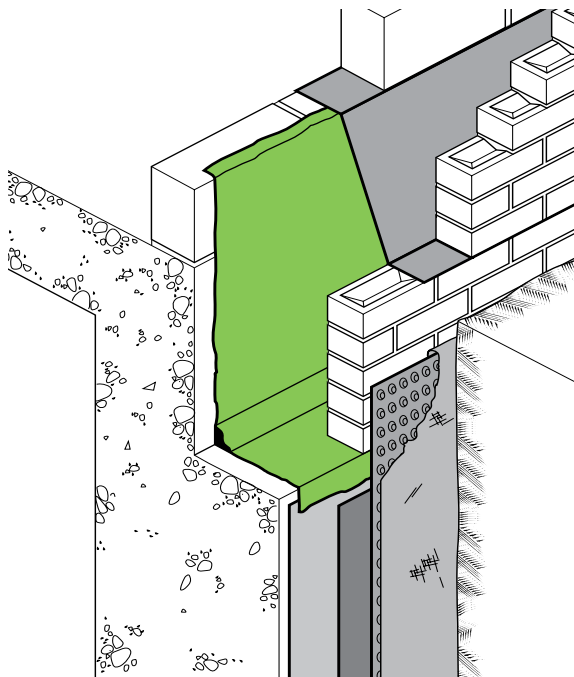
Bituthene LM pack is supplied in a single can containing Part A base with the Part B reactor located separately under the can lid. Using a slow speed mixer with Paddle MR2, pre-mix part A then, add Part B (clear) to Part A (black). Mix the two parts for approximately 1 minute at 100 rpm. Mix for a further 2-3 minutes at 200-300 rpm until uniform blending is achieved. Scrape the sides and bottom of the container during mixing to ensure thorough blending. At temperatures below +10°C, store overnight at +20°C to improve blending and workability. Clean tools and equipment with solvent tool cleaner before Bituthene LM has cured.

Application

Apply Bituthene LM with a serrated trowel or float, solid barrel gun or hand held squeegee to achieve a minimum thickness of 2.5 mm. Once mixed Bituthene LM must be applied within one hour at normal ambient temperatures. Material which has thickened must be discarded.

Advantages

- **Liquid applied** – conforms to irregular profiles.
- **Waterproof** – resistant to water vapour and water pressure.
- **Tough rubber-like** - flexible and damage resistant.
- **Seamless** – joint free membrane.
- **Chemically cured** – unaffected by in-service temperature variations.
- **Cold applied** – no flame hazard.
- **Preprufe® and Bituthene® compatible** – complements both waterproofing membrane systems.



Details shown are typical illustrations only and not working drawings. For assistance with working drawings and additional technical advice please contact Grace Technical Services

Supply

Bituthene® LM 5.7 litre pack (Parts A & B)
Shelf life 12 months

Complementary Product
Adcor® 500S 6 x 5 m rolls

Ancillary Equipment
 Megamixer variable speed 100 - 500 rpm (1200 W 110v by Refina or similar).
 Solid barrel gun, spatula, trowel or float.

Bituthene LM shall be allowed to cure for 24 hours before being overlapped by the Bituthene Membrane to achieve watertight continuity.

UV Protection

Bituthene LM is not designed for permanently exposed applications, it should be covered within 30 days of application.

NBS Specification Clause

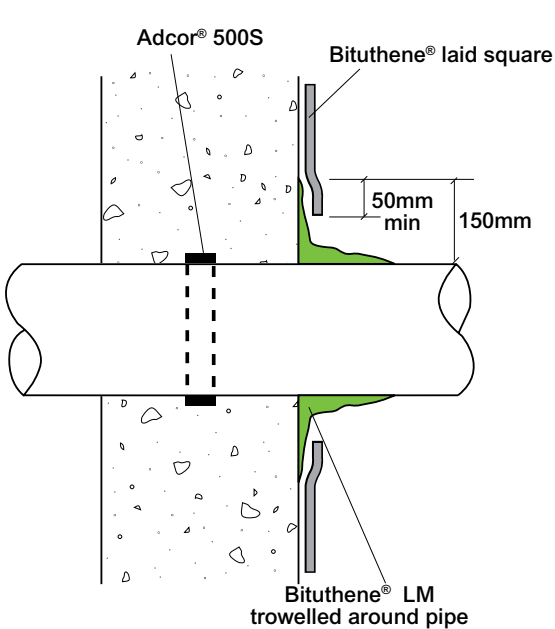
Refer to Clause J40 370.

Health and Safety

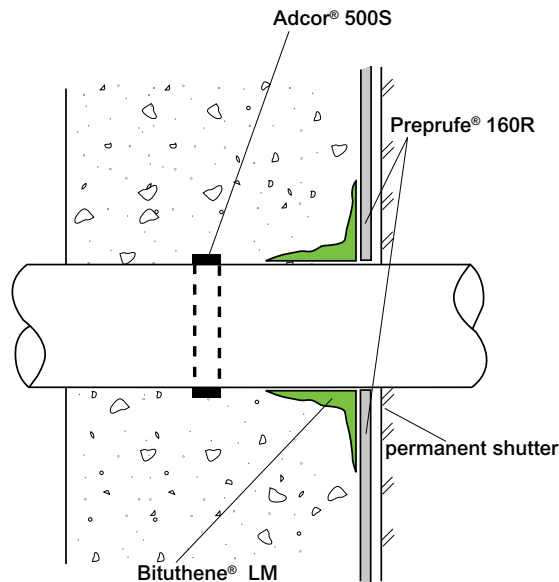
Read the product label and Material Safety Data Sheet (MSDS) before use. Users must comply with all risk and safety phrases. MSDS's can be obtained from Grace Construction Products or from our web site at www.graceconstruction.com.

Approximate Coverage	Bituthene® LM 5.7 litre (Part A & B)
2.5 mm thick x 300 mm wide	7.6 lin m (2.28m ² /unit)
2.5 mm thick x 2 x 150 mm wide with 20 mm Fillet	6.0 lin m
20 mm Fillet	28.4 lin m

Coverage rates will be dependent on substrate texture.



Pipe Entry - Bituthene



Pipe Entry - Preprufe

www.graceconstruction.com

Grace Construction Products Limited Ipswich Road Slough Berkshire SL1 4EQ United Kingdom
 Tel +44 (0)1753 490000 Fax +44 (0)1753 490001

Adcor and Preprufe are registered trademarks of W R Grace & Co.-Conn.

The information given is based on data and knowledge considered by GRACE to be true and accurate and is offered for the user's consideration, investigation and verification only. Since the conditions of use are beyond our control we do not warrant the results to be obtained. None of these statements, recommendations or suggestions shall constitute a warranty, guarantee, representation or statement of similar legal nature. No statement, recommendation or suggestion is intended for any use which would violate or infringe statutory obligations or any rights belonging to a third party. This data sheet should be checked against the latest version available from the local GRACE Representative or the GRACE website. The information contained in the latest data sheet supersedes all previously published editions. Visits to site by GRACE personnel do not constitute supervisory responsibility.

These products may be covered by patents or patents pending. Copyright 2011. Grace Construction Products Ltd BITLM/UK/001a 09/11

GRACE